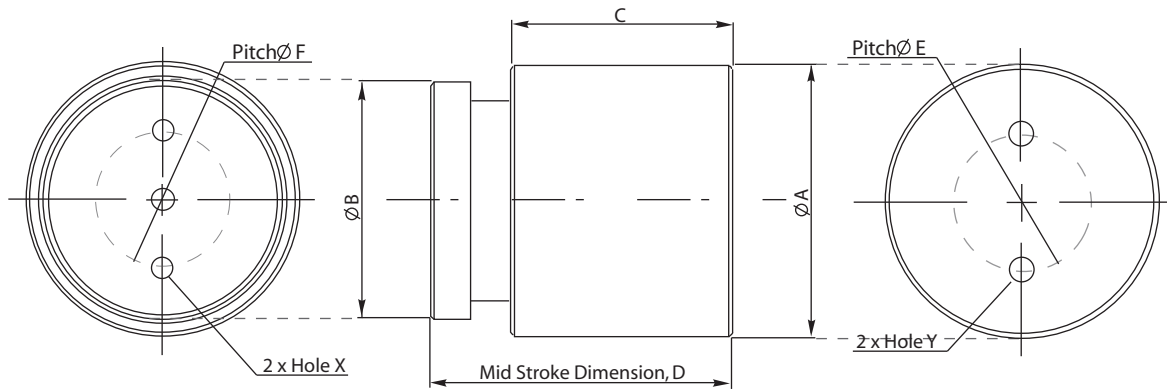


CVC - Circular Voice Coil



Dimension,mm	CVC 20-10	CVC 30-15	CVC 40-20	CVC 40-HF-6.5	CVC 60-25	CVC 90-HF-20	CVC 180-15
A	20.0	30.0	40.0	40.0	60.0	90.0	180.0
B	16.6	25.2	34.8	34.8	50.6	81.6	172.0
C	19.0	24.5	32.5	40.5	43.5	90.0	90.0
D	31.0	39.0	49.8	49.3	66.1	109.4	115.0
E	10.0	16.0	20.0	20.0	30.0	48.0	130.0
F	10.0	12.6	20.0	20.0	30.0	40.0	140.0
X	M3	M3	M4	M4	M5	M6	M6
Y	M3	M3	M4	M4	M5	M6	M6

Stroke, (mm)	10.0	15.0	20.0	6.5	25.0	20.0	15.0
Force Constant (at mid stroke), N/A	2.0	7.5	15.7	26.8	21.1	46.3	175
Back EMF Constant (at mid stroke), V/ms ¹	2.0	7.5	15.7	26.8	21.1	46.3	175
Peak Force, N	7.0	17.1	50.2	120.4	82.5	462.6	1750
Continuous Force, N	3.0	7.5	22.0	40.1	35.9	161.9	612.5
Continuous Current , A	1.5	1.0	1.4	1.5	1.7	3.5	3.5
Peak Current , A	3.5	2.3	3.2	4.5	3.9	10.0	10.0
Coil Resistance (coil at 25° C), Ω	3.6	9.9	16.7	16.0	9.0	3.9	9.7
Coil Resistance (coil at 100° C), Ω	4.7	12.9	21.6	20.7	11.7	5.0	12.5
Coil Inductance, (mH)	0.5	3.2	12.5	5.5	17.5	9.8	9.8
Power Loss (at continuous force, 100° C),W	10.5	12.9	42.4	46.6	33.8	61.2	153.1
Maximum Allowable Coil Temperature, C	155.0	155.0	155.0	155.0	155.0	155.0	155.0
Recommended Bus Voltage, V	24.0	24.0	48.0	60.0	48.0	120.0	240.0
Coil Clearance, (mm)	0.5	0.5	0.5	0.5	0.7	1.0	1.2
Coil Assembly Mass (gram)	9.0	24.0	63.0	70.0	204.0	1150.0	TBA
Magnet Assembly Mass (gram)	30.0	92.0	205.0	200.0	660.0	1400.0	TBA

Note: Specification subject to further adjustments.

Part Number

